

## Transforming Reduction into Multi-Block Relief Printing

Integrating 'found' knowledge from living archives  
into the pedagogic delivery at KHiO

Victoria Browne  
Associate Professor of Print and Publishing  
Oslo National Academy of the Arts, Norway

[www.victoriabrowne.com](http://www.victoriabrowne.com)  
[www.grafikk.khio.no](http://www.grafikk.khio.no)

Finding Contemporary Heritage, 2021  
Found. Beauty in time and space  
EEA Grant Funding

Iceland  
Liechtenstein  
Norway grants

Ministerstwo  
**Kultury**  
i Dziedzictwa  
Narodowego.



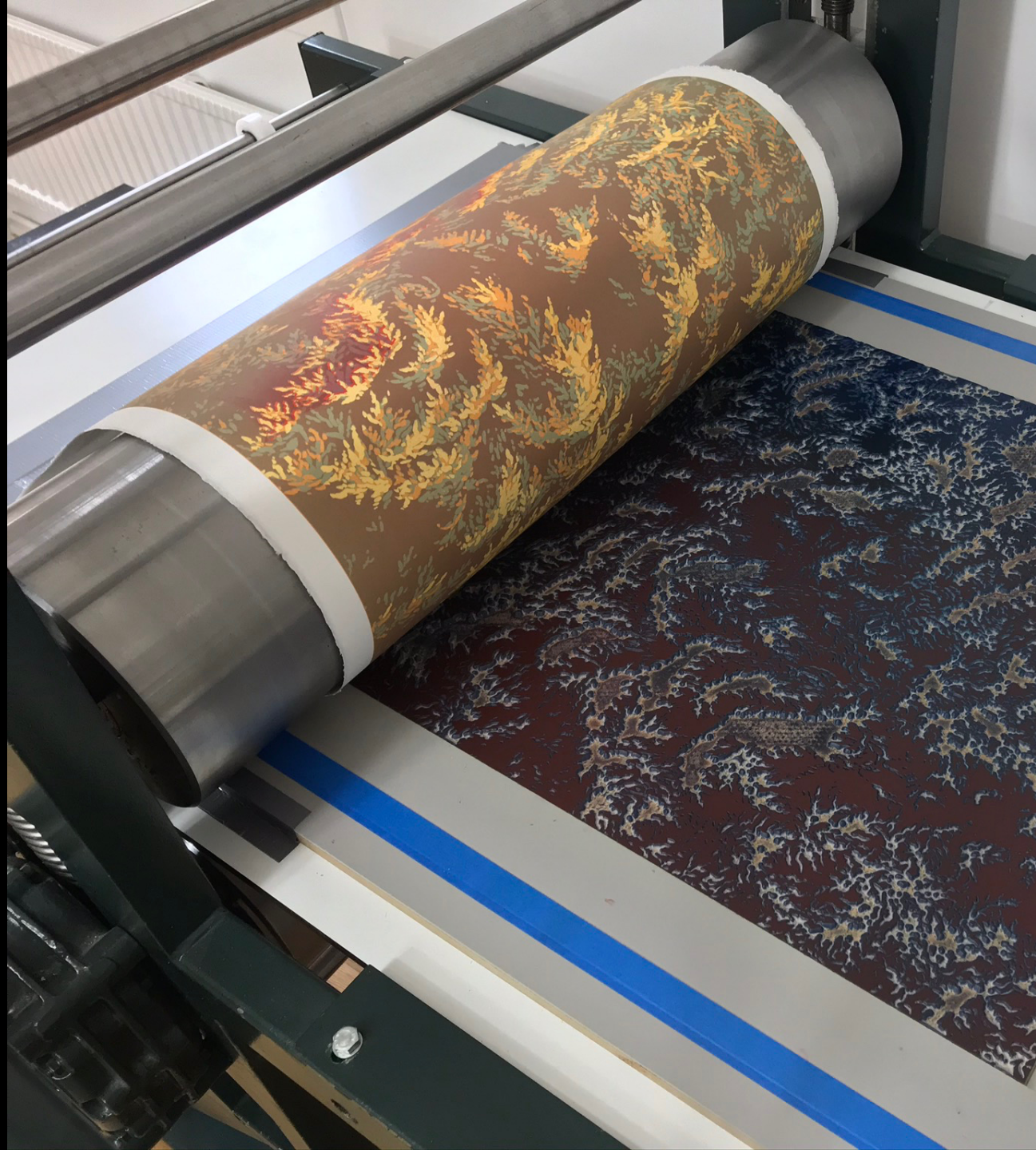
Akademia Sztuk Pięknych  
im. Jana Matejki  
w Krakowie

**Artistic Practice**

Oslo  
Norway

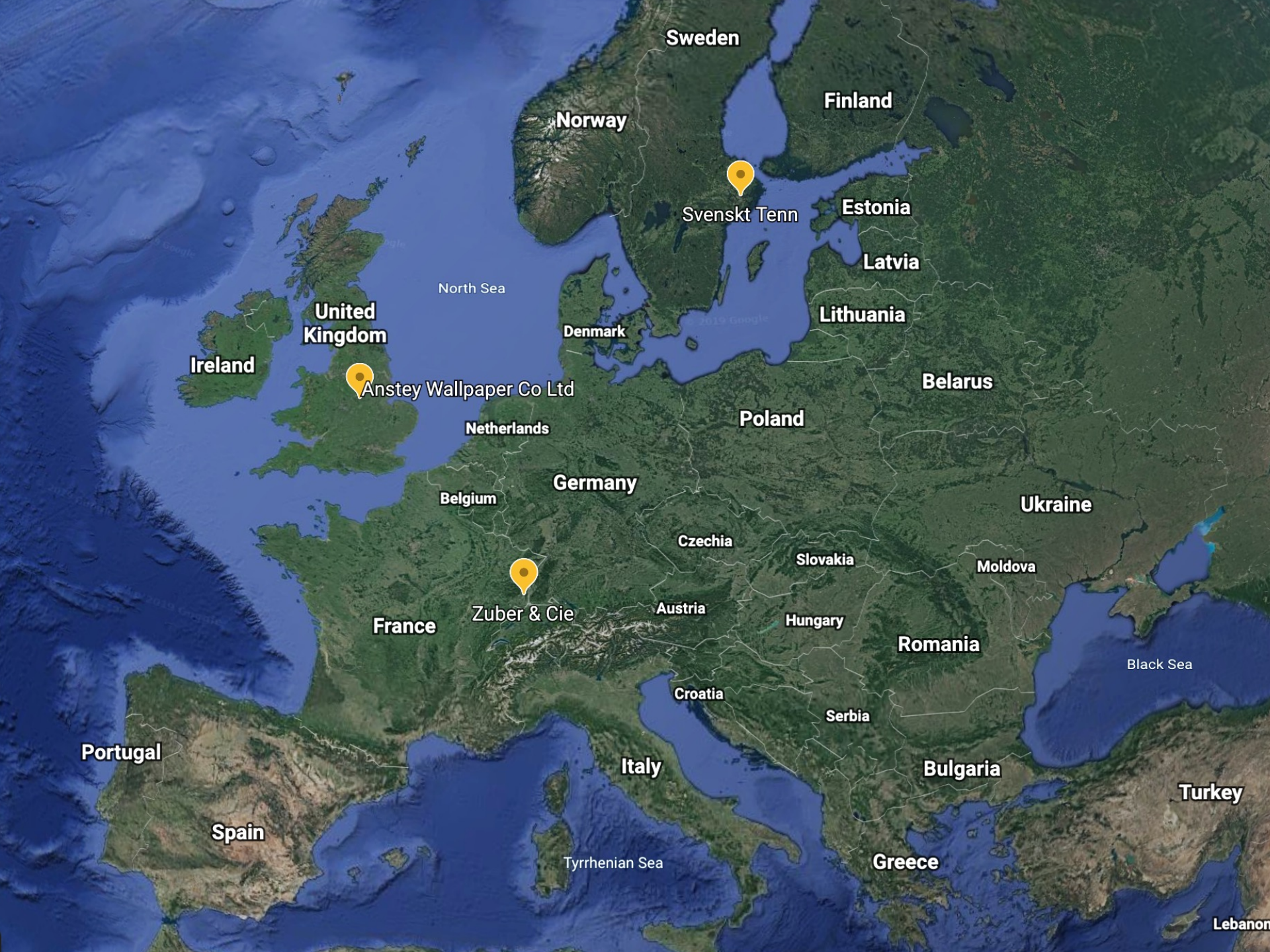












Sweden

Norway

Finland

Svenskt Tenn

Estonia

Latvia

North Sea

Denmark

Lithuania

United Kingdom

Ireland

Anstey Wallpaper Co Ltd

Belarus

Netherlands

Poland

Germany

Belgium

Ukraine

Czechia

Slovakia

Moldova

Zuber & Cie

Austria

Hungary

Romania

Black Sea

France

Croatia

Serbia

Portugal

Italy

Bulgaria

Turkey

Spain

Tyrrhenian Sea

Greece

Lebanon



**Zuber & Cie**

Rixheim, Alsace  
France



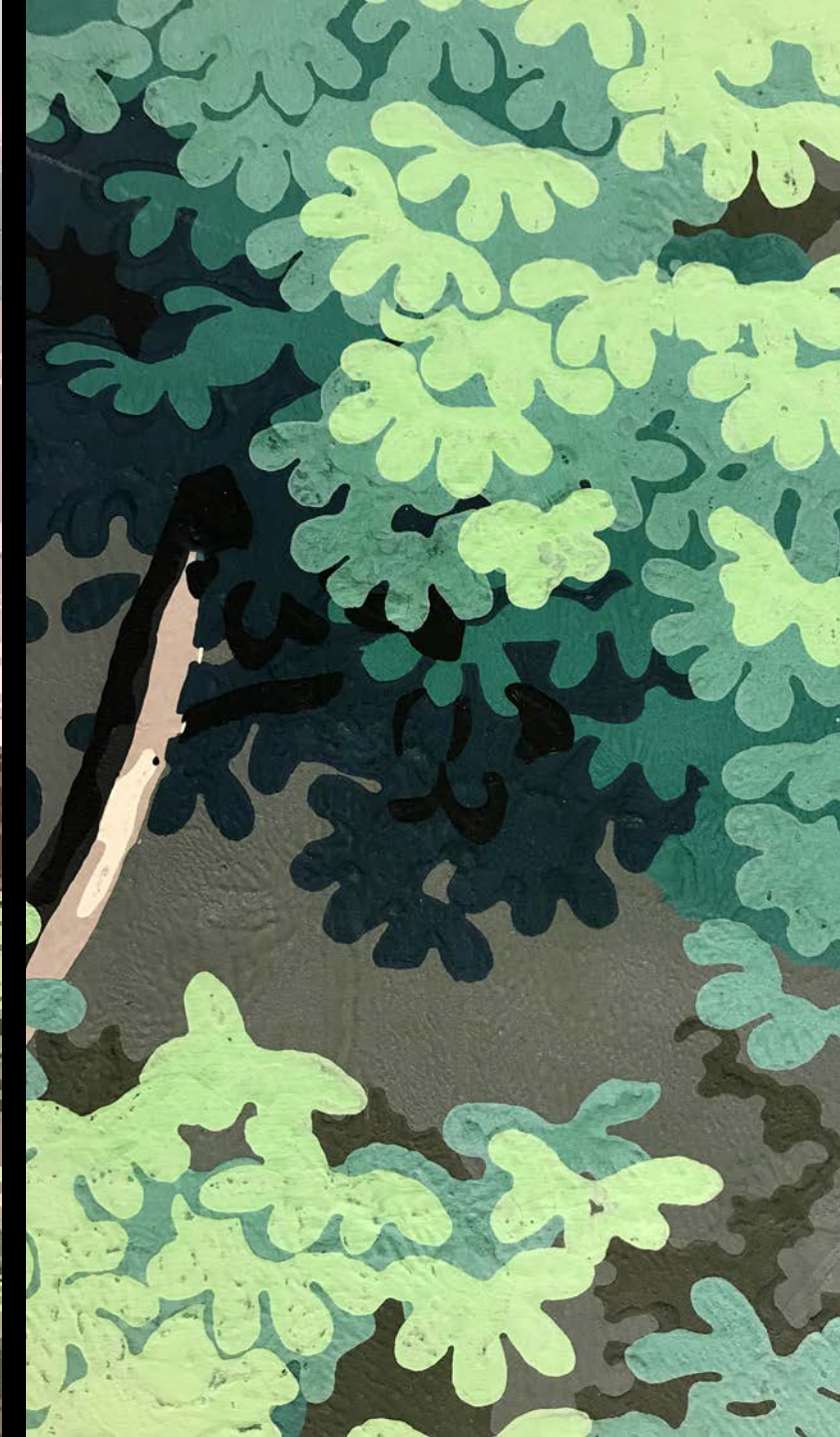
HOTEL DE VILLE

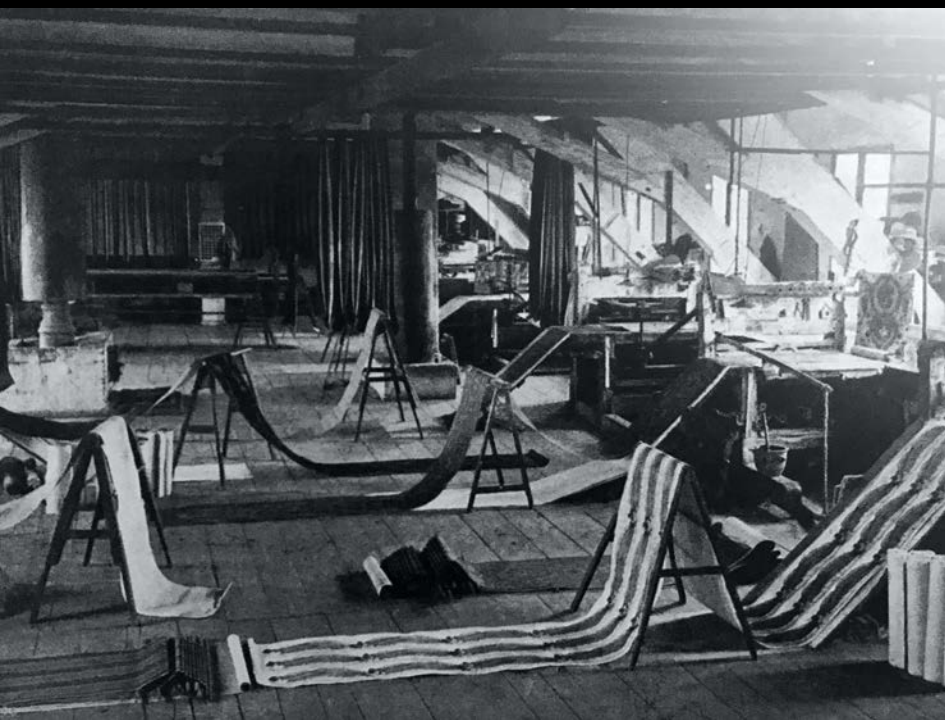
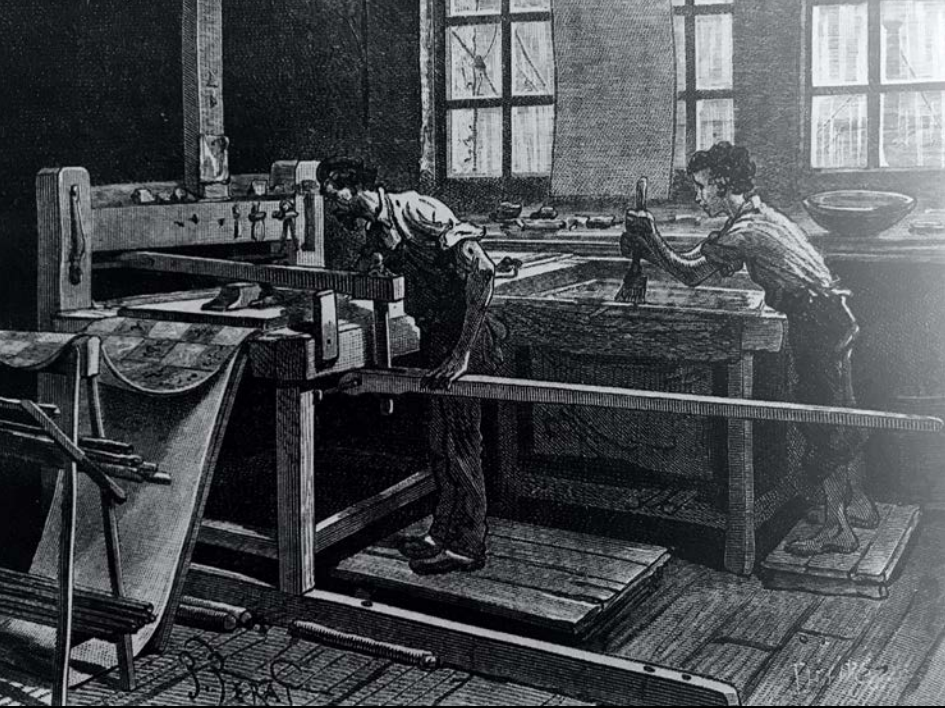
ZÜRICH











LES VUES DE SUISSE  
PAR MORGIN 1861  
ET ZUBER, C<sup>o</sup>  
L'YVERDON

LES VUES DE SUISSE  
PAR MORGIN 1861  
ET ZUBER, C<sup>o</sup>  
L'YVERDON

8

MADE IN FRANCE

LES VUES DE SUISSE  
PAR MORGIN 1861  
ET ZUBER, C<sup>o</sup>  
L'YVERDON



Zuber & Cie

manufacture de papiers peints



A RIXHEIM DEPUIS 1797



Svenskt Tenn

Stockholm  
Sweden







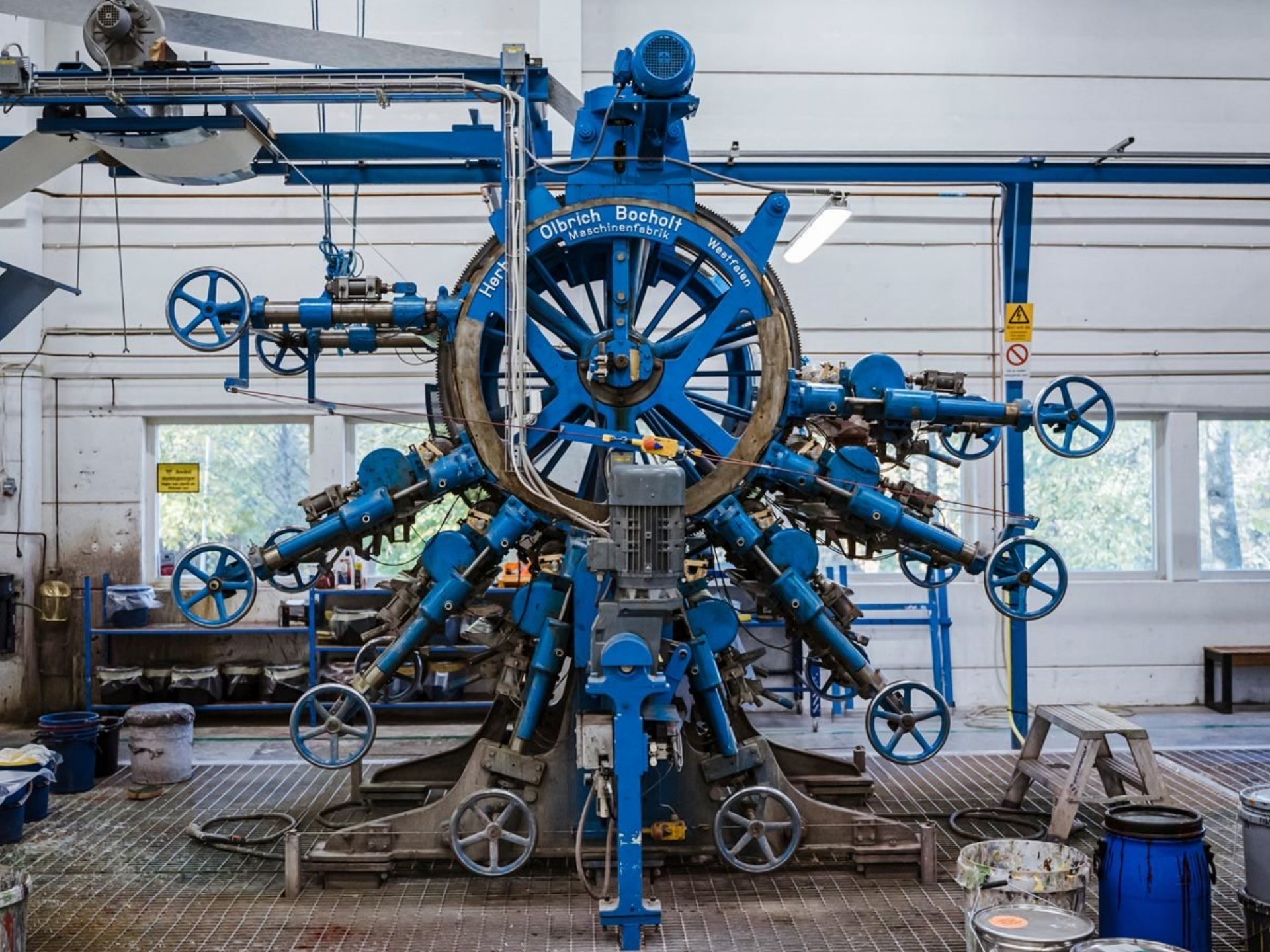












Olbrich Bocholt  
Maschinenfabrik

Herke

Weerraden

W. Kuhn  
Mittelweg 10  
42699 Solingen

Warning sign: Triangle with exclamation mark  
Prohibition sign: Circle with slash



Anstey Wallpaper Ltd

Loughborough, Leicestershire  
United Kingdom



LADYBIRD HOUSE  
style library  
SERVICES  
WELCOMING  
Sustainable  
100%





LETTERS HOUSE  
100%  
100%  
100%

WARRANTY  
100%  
100%

NO SMOKING

NO SMOKING

NO SMOKING

NO SMOKING

NO SMOKING

NO SMOKING

NO SMOKING

NO SMOKING

NO SMOKING

NO SMOKING

NO SMOKING

NO SMOKING

NO SMOKING

NO SMOKING

NO SMOKING

NO SMOKING

NO SMOKING

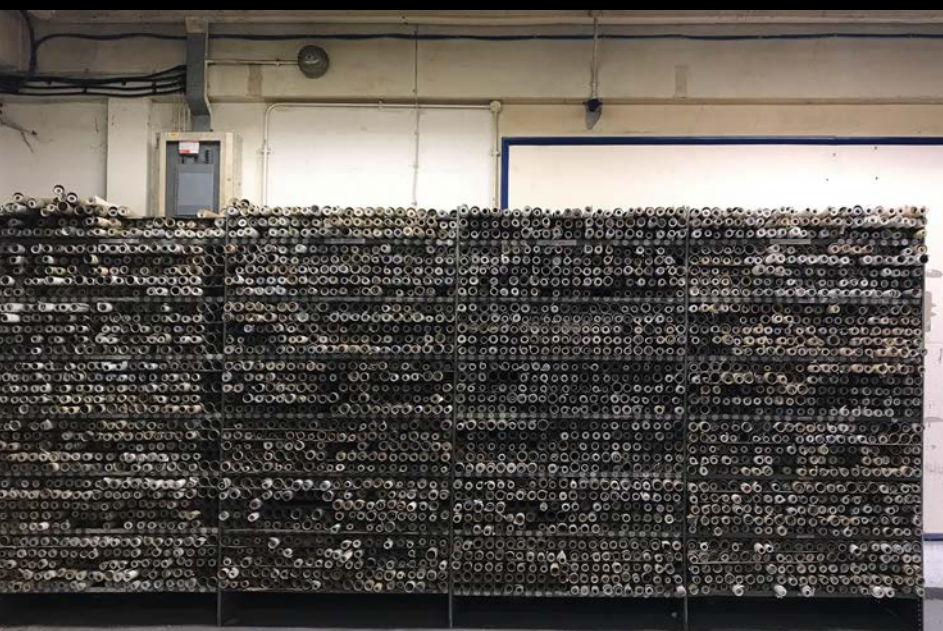
NO SMOKING

NO SMOKING

NO SMOKING



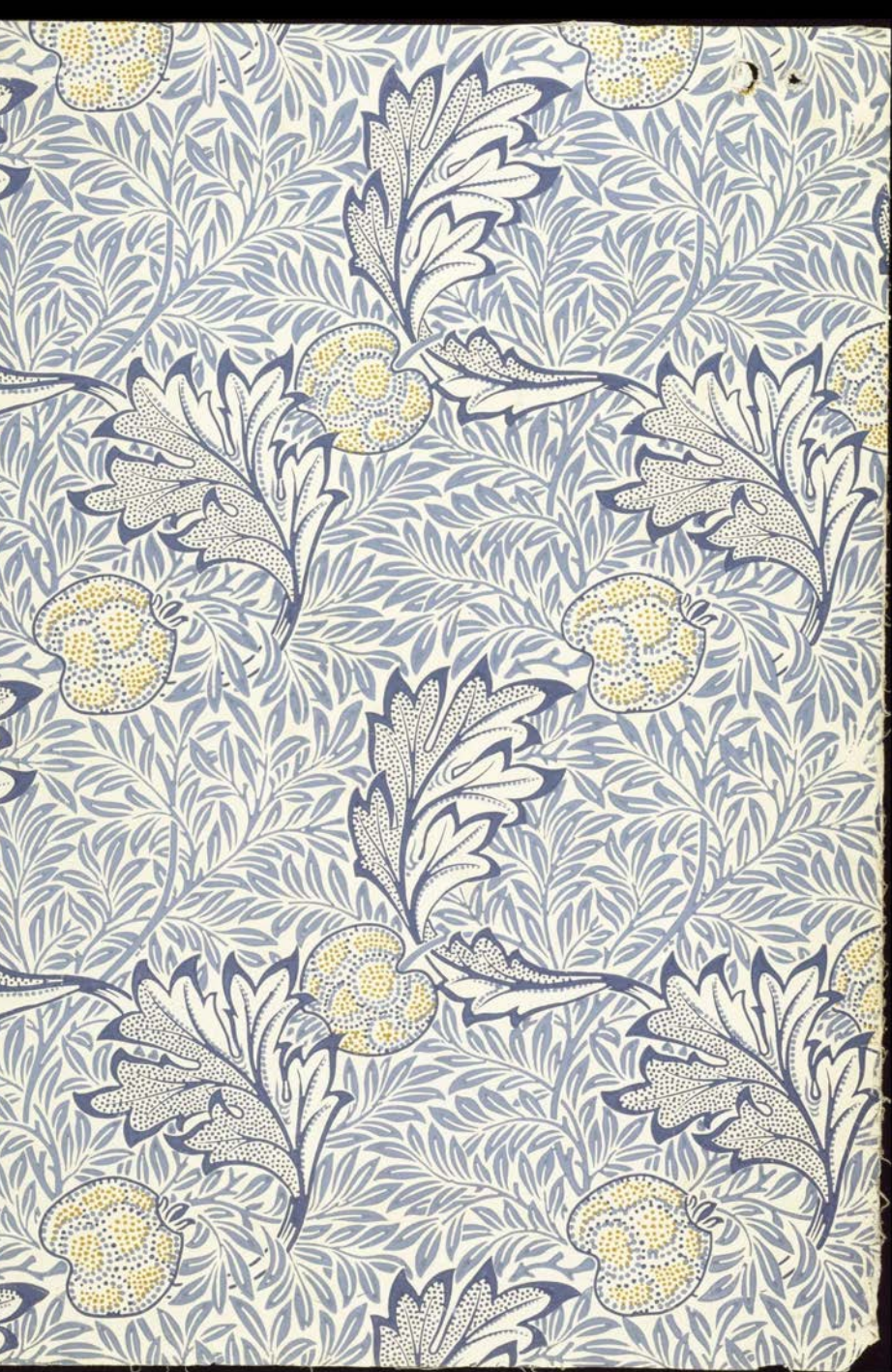










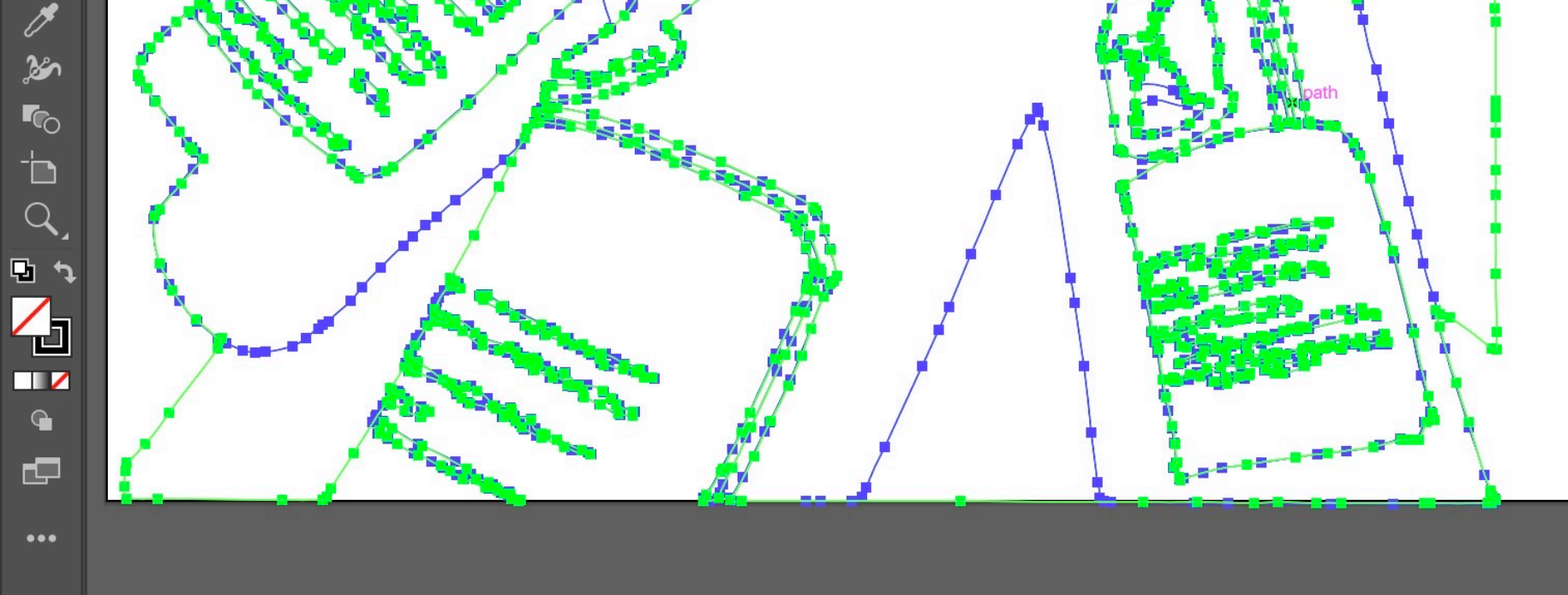




Oslo National Academy of the Arts

Kunsthøgskolen i Oslo  
Norway





ReductiontoCNCRouting56.tif - Vector Magic Desktop Edition



### Image Segmentation [Help](#)

The segmentation is the crude partitioning of the image into pieces that are then smoothed to produce the final vector art.

#### Complexity

Fewer Segments (1) More Segments

#### Minimum Number of Pixels

Should normally be left at 0, since it can destroy details.

Minimum Number of Pixels: 0 px

#### Anti-Aliasing Artifact Rejection

Anti-aliasing can lead to undesired segments between shapes. Artifact rejection removes such segments.

None  Moderate  Aggressive

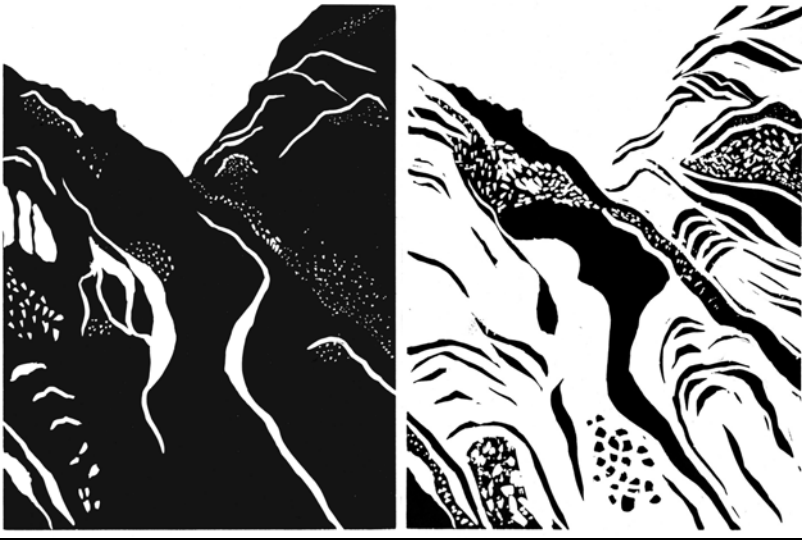
#### Auto-Update

Auto-Update Segmentation









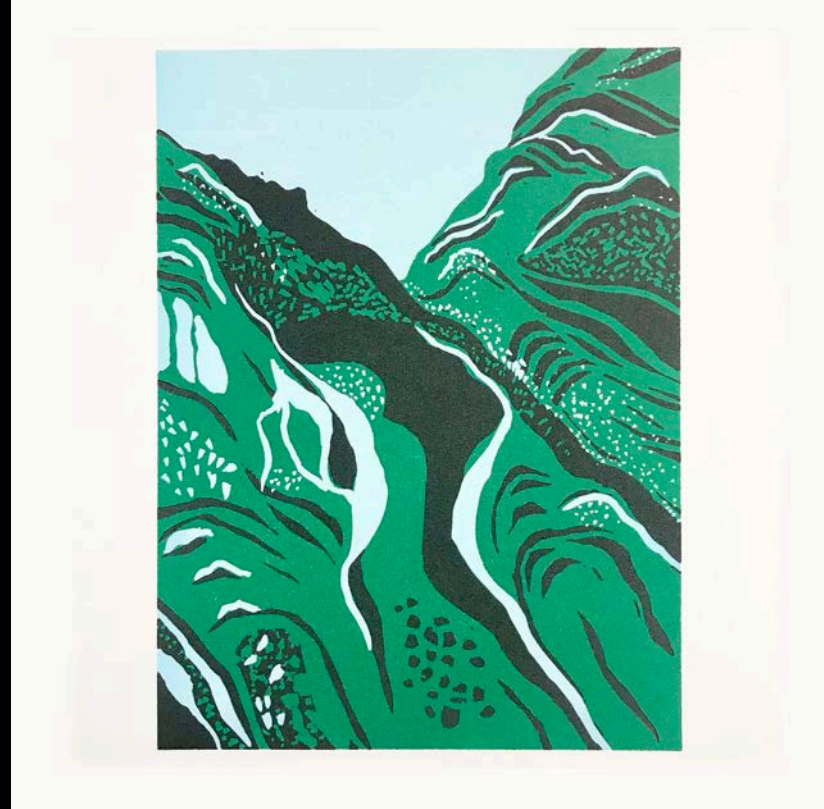
Router DNC

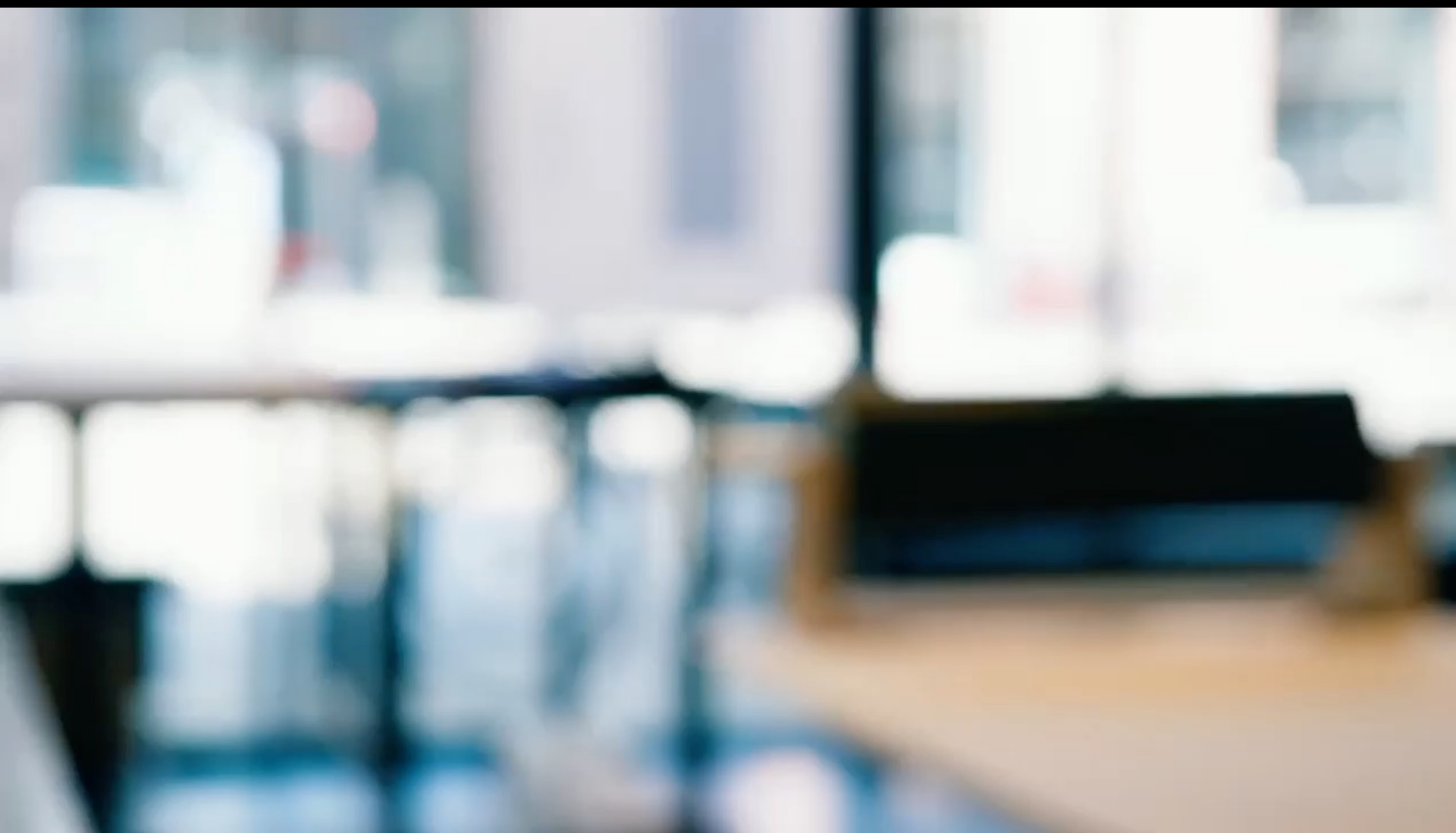
MultiCam 3-103-R-PF (14245) Online

ECTOR1\_Setup 1.cnc [1] Job sent to controller. Line 5492, Char 0

44.8345 Y11	0. F 25.
44.5956 Y11	44.5292 Y11
45.3924 Y11	45.5463 Y11
45.7878 Y11	46.1026 Y11
45.8023 Y11	45.5165 Y11
45.5463 Y11	45.5463 Y11







### **Victoria Browne**

Associate Professor of Print and Publishing  
Oslo National Academy of the Arts, Norway

@victoriabrownestudio  
www.victoriabrowne.com  
www.grafikk.khio.no

#### References:

Sabiescu, E. (2020) *Living Archives and The Social Transmission of Memory*.  
Curator the Museum Journal. 63(4):497-510.  
Shales, E. *The Shape of Craft* (2017) Reaktion Books.

#### With thanks to:

@august\_rosenlund\_kvam  
@qspa\_gallery  
@svenskttenn