

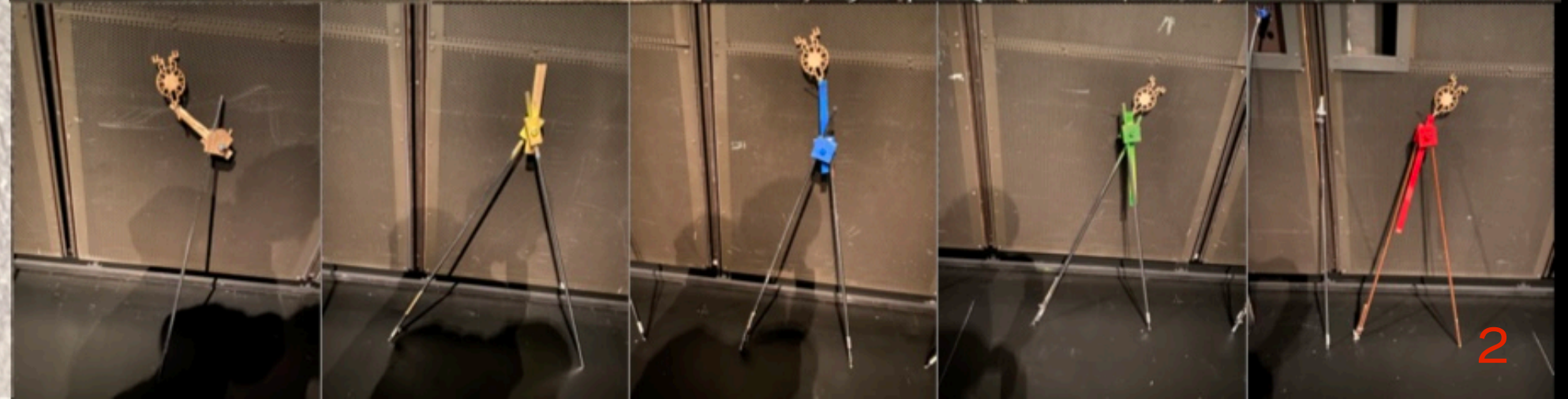
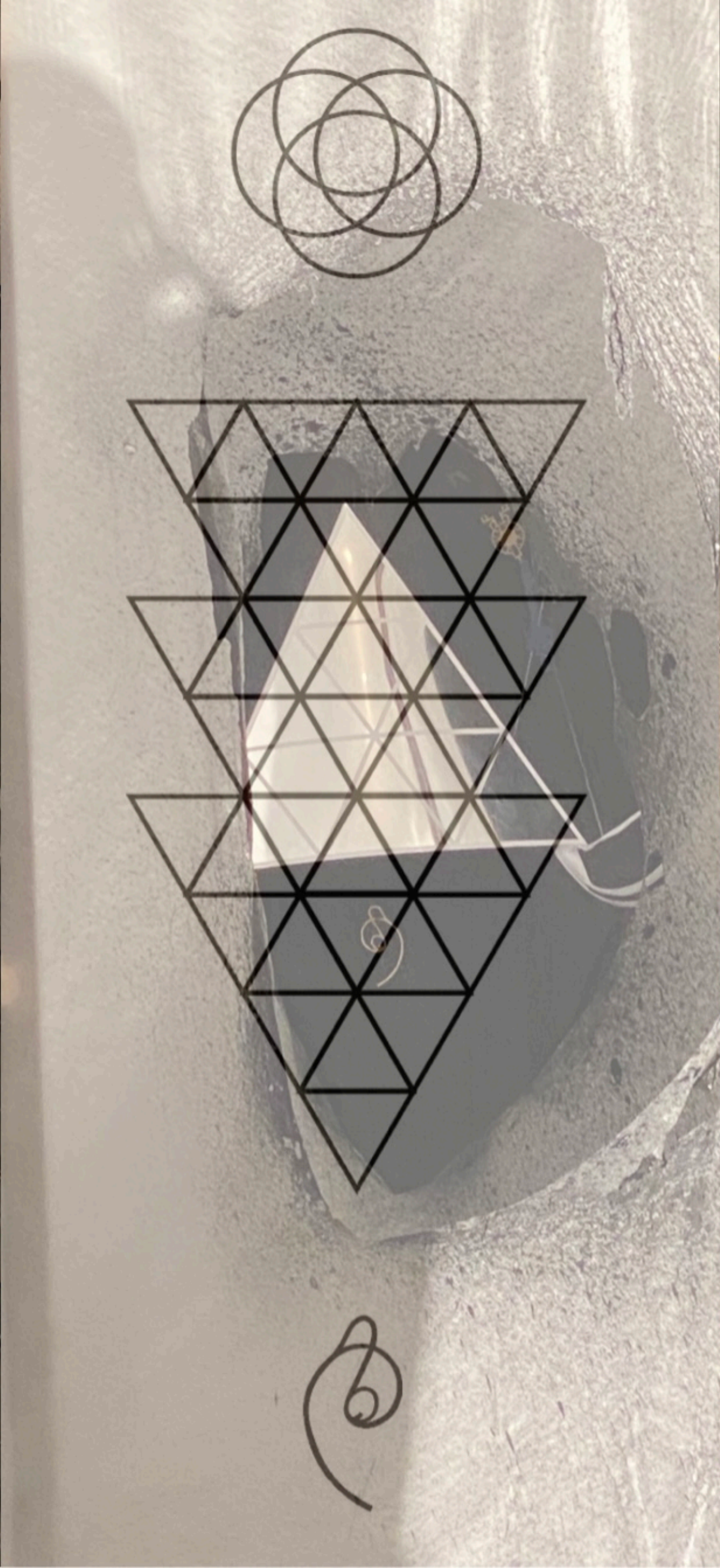


OSEH

Environmental
Lunchtime
Discussion

09.03.22

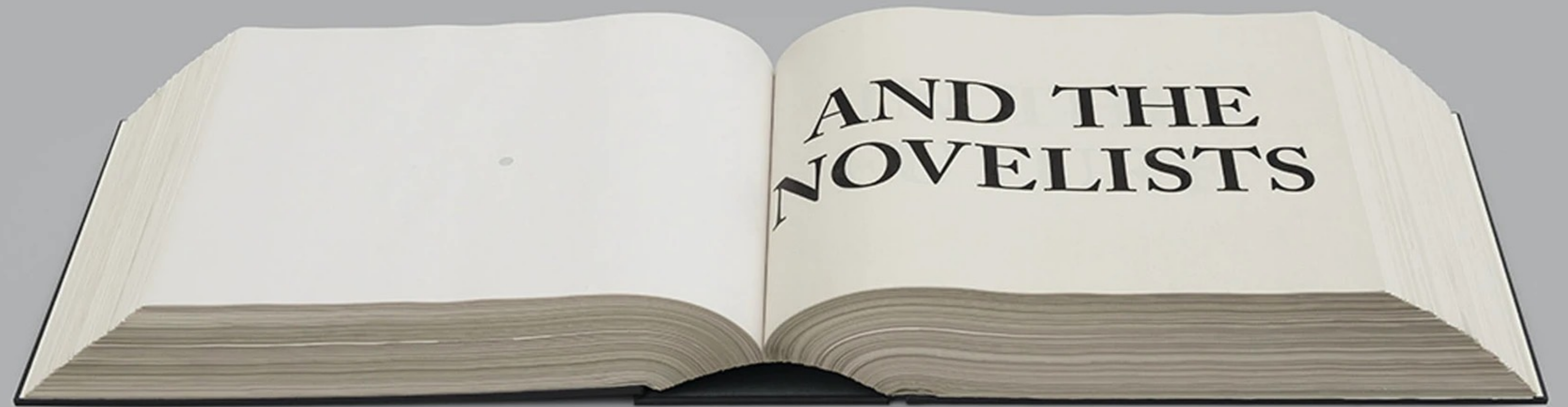
«Wheeling» *environmental humanities*
...—in excess of what designers do—...





[KATRINE KØSTER HOLST](#)

“The investigations built on many years of experience in the professional field of ceramics. The central question has been: how do land-formations grow, move and disappear through slow natural processes as for example erosion, sedimentation and weathering? What binds the core of a form to its surface? What is my emotional relation to clay and landscape about?” (www.khio.no, my transl.)



[ANE THON KNUTSEN](#)

“In her PhD in graphic design at Oslo National Academy of the Arts Ane Thon Knutsen researched a turn in Virginia Woolf’s authorship when she went about to publish books in her own editions at Hogarth Press in 1917. As Virginia Woolf, Thon Knutsen works with type-setting with moveable types, and has researched through graphic adaptations of the first novel Virginia Woolf printed and published at the Hogarth Press, *The Mark on The Wall*. This novel was written while Virginia Woolf has teaching herself type-setting.” (ub.uio.no my transl.)

[]

[]

[]

[]

[]

[]

[]

[]

[]



Stefan Sagmeister

Beautiful Numbers

Solaris corrected

SIDDI Stavgersand, siddi myn,
eksist neali nay e t all, monni
kenklud nu. KAN bee it eksist
onli es en auld naym,
as e simbl ev a sididi?
JA, es if playsis in 2430 stil kud bee wichtig!
STAVGERSAND, e neali
emti plays
in midflo ev so monni
sels, organeks, konneks, pow en mishmash ev
lors. BUT 'bjuuti' de m ses bee here,
twixt sand en hy fell.
AS a fynl werd fer dis?
'BJUUTI', de werd det kan bee kartid
evriwea. JA, evriwea dems fichts
for de werd 'bjuuti'. IF a plays
nay hev 'bjuuti'
de n deas neali no plays dems fond ev.

HERE bee so big flo ev tourists,
fra Asi en Russi ofts, det thruu
en upfells shell travl, te green-
lyf in WYLD-BJUUTI-PARK-NORWG!
EIN veek undr himml
in fellparks mit fowlis ev seldm tyrs,
en mayhaps de m orlso see e litl hart,
wot bee sudnli mungst de trees,
wiv such e karm, wundraing gays aboot dem?
IN sun, wind, sno, but ofts onli rayn.
DATS wot dem kum for, betalen for and gets inte.
BETALEN for dem boddi en brayns e
wikkig plays hev bin!
BUT wot dem thngks
dem wil end up es!

Øyvind Rimbereid

The North Sea After the Oil—A Literary Perspective

“Based on texts of e.g. Marit Eikemo and Øyvind Rimbereid the lecture will illuminate how the oil-industry has changed the North Sea, and our representations of this maritime area, rich in traditions.” (www.uio.no my transl.)

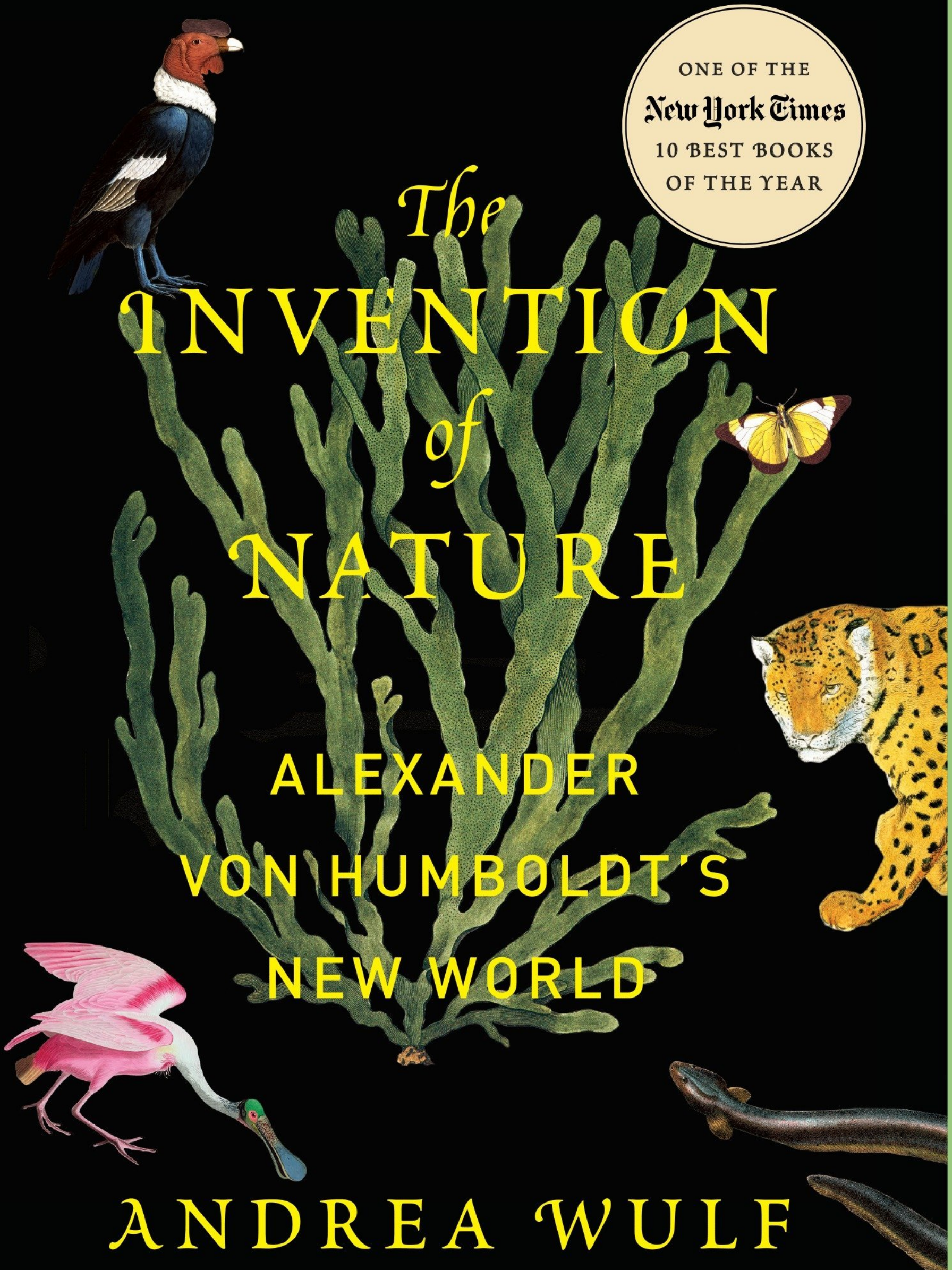
IS

IS NOT

UNILATERAL DUALITY

NATIONAL BESTSELLER

ONE OF THE
New York Times
10 BEST BOOKS
OF THE YEAR



The
INVENTION
of
NATURE

ALEXANDER
VON HUMBOLDT'S
NEW WORLD

ANDREA WULF

"Vivid and exciting. . . Wulf's pulsating account brings this dazzling figure back into a dazzling, much-deserved focus." —*The Boston Globe*

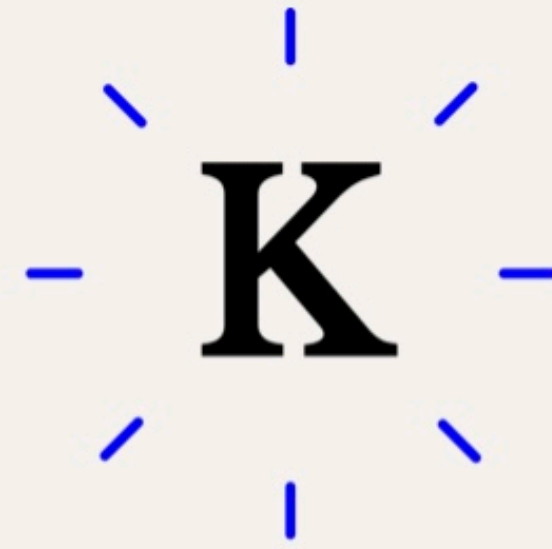


PRINCIPLES OF
NON-PHILOSOPHY

FRANCOIS LARUELLE

TRANSLATED BY NICOLA RUBCZAK AND ANTHONY PAUL SMITH

BLOOMSBURY



Citation compass

☰ MENU

🔍 SEARCH

🌐 NORSK

→ Choose referencing style

APA 7th

APA 6th

APA 7th for footnotes

APA 6th for footnotes

IEEE

→ Tips and Help

APA 7th FAQ

APA 6th FAQ

IEEE FAQ

→ Source Evaluation

What is source evaluation?

Is the author credible?

All

Article

Book

Internet

Official publication

Others

Audiovisual media

Brochures and pamphlets

Compendium

Conference paper

Image found online

Image from printed source

Online report

Personal communication
(Lecture notes, e-mails etc.)

Podcast

Sheet music

Ingrid Pettersson:

Artist: Unknown. (n.d.). *Sailor's chest*. Medium: wood, canvas, cotton, metal. Dimensions: 44 x 55 x 37cm. Collection: Ingrid Pettersson. Acquisition: Inherited from Kent Pettersson in 2010.

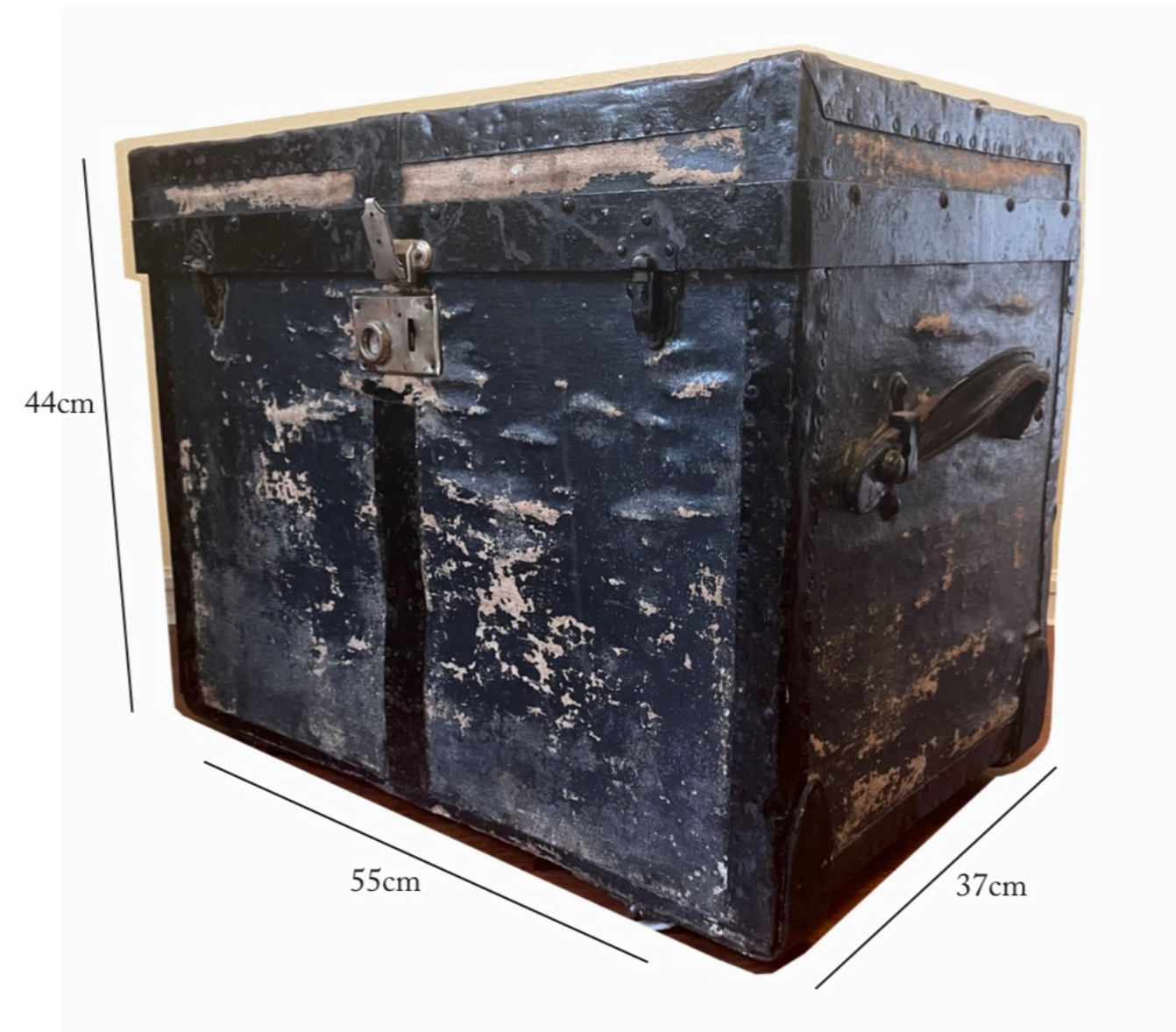
Lennart Pettersson (1951-1983), Kent Pettersson (1983-2010), Ingrid Pettersson (1991 -) (Director`s), Unknown (Producer). (1951). *The traveling chest*. (Sailor`s chest). Gotland. Lennart Pettersson.

Morteza Vaseghi:

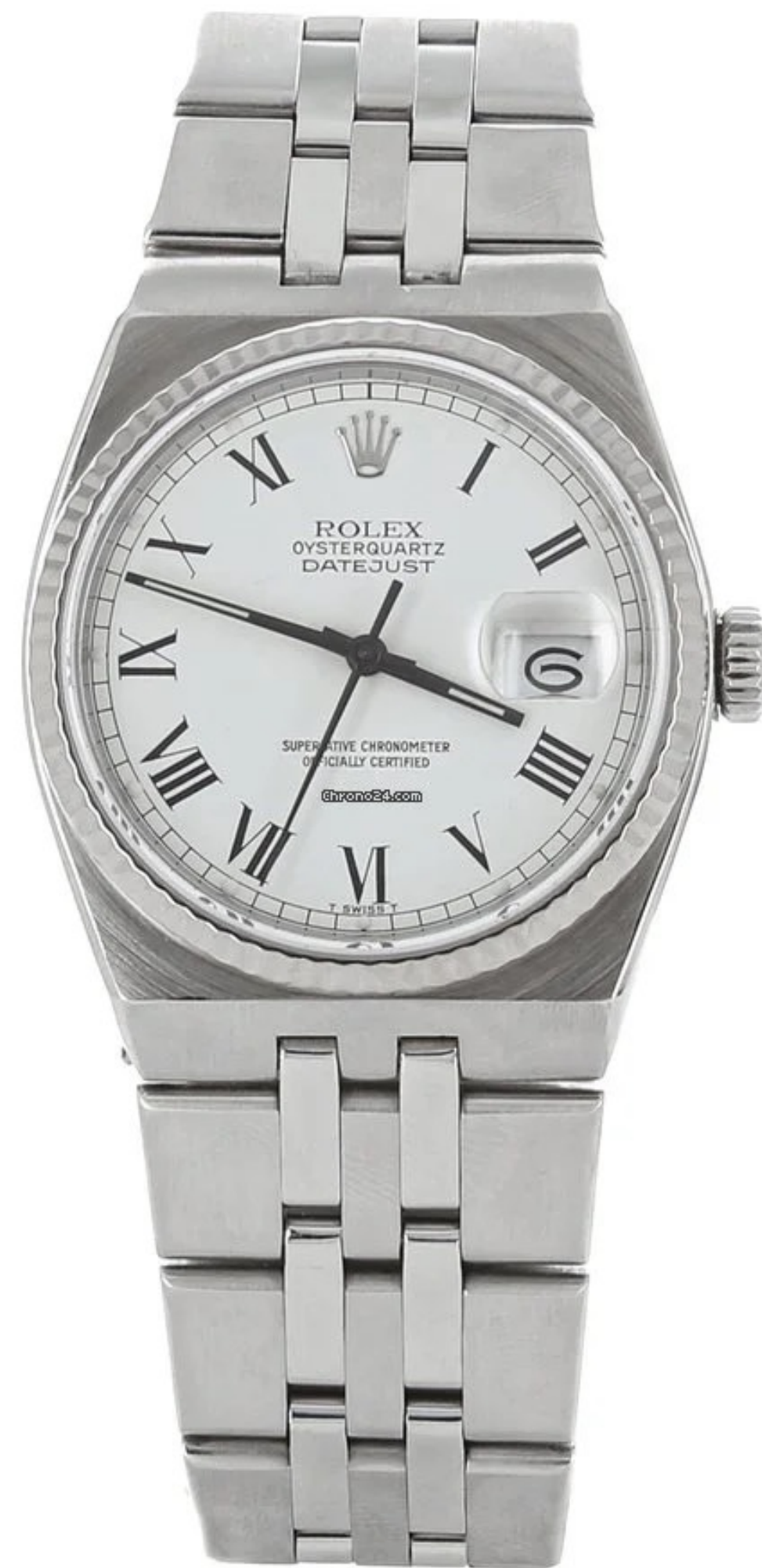
Vaseghi, K. & Vaseghi, M. (circa 1984). *Oysterquartz Datejust*. (Watchmaker Bjerke AS. & Boutique Rolex - Pisa Orologeria. Rep.). ([17014 ed.]. White Dial Black Roman 36mm Stainless Steel ed.). London & Geneva. Rolex.

Lydia Hann:

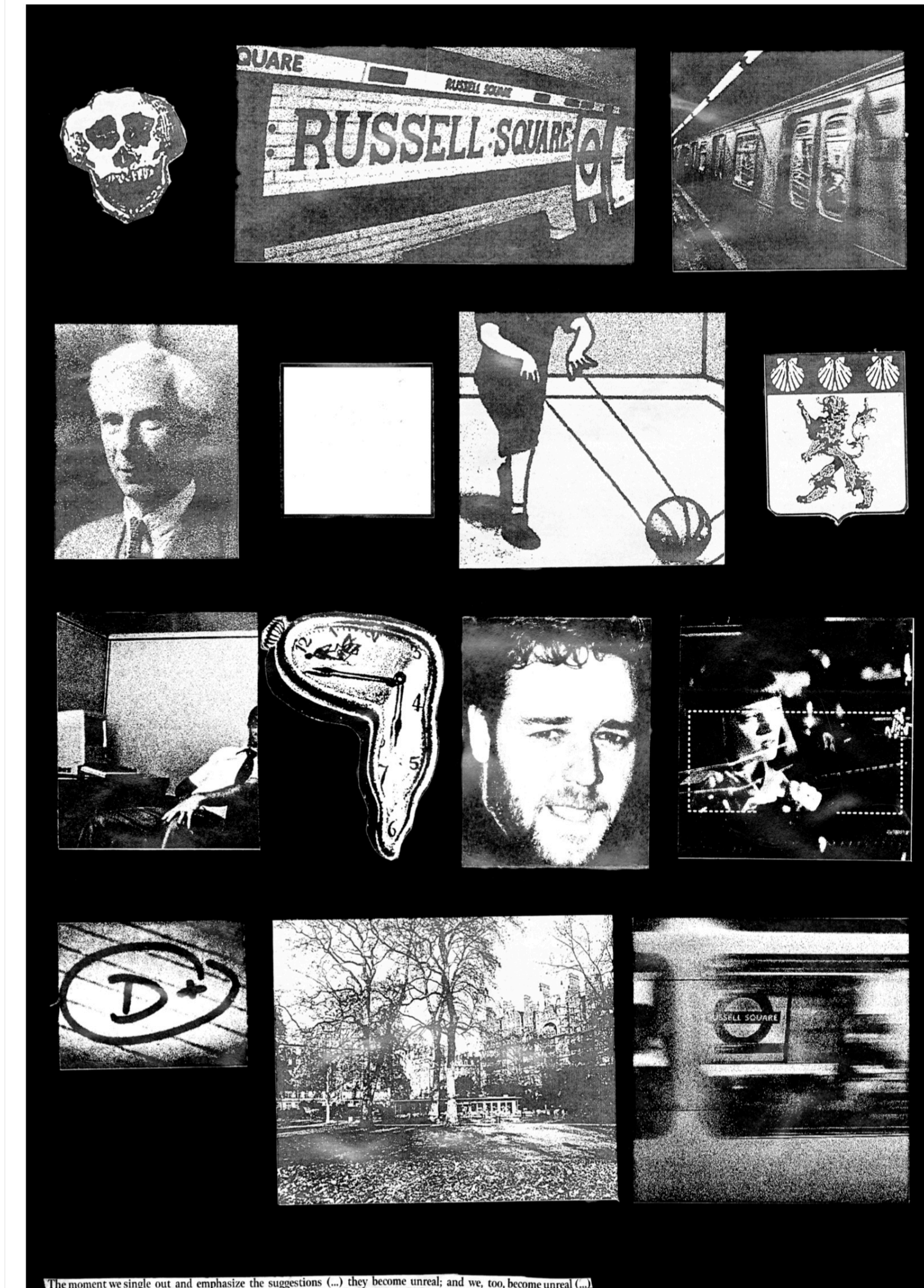
Safilo. (1980?). Team 457 Round Clear Acrylic and Dark Turtle [glasses]. Private collection, Oslo.



Artist: Unknown. (n.d.). *Sailor's chest*. Medium: wood, canvas, cotton, metal. Dimensions: 44 x 55 x 37cm. Collection: Ingrid Pettersson. Acquisition: Inherited from Kent Pettersson in 2010.

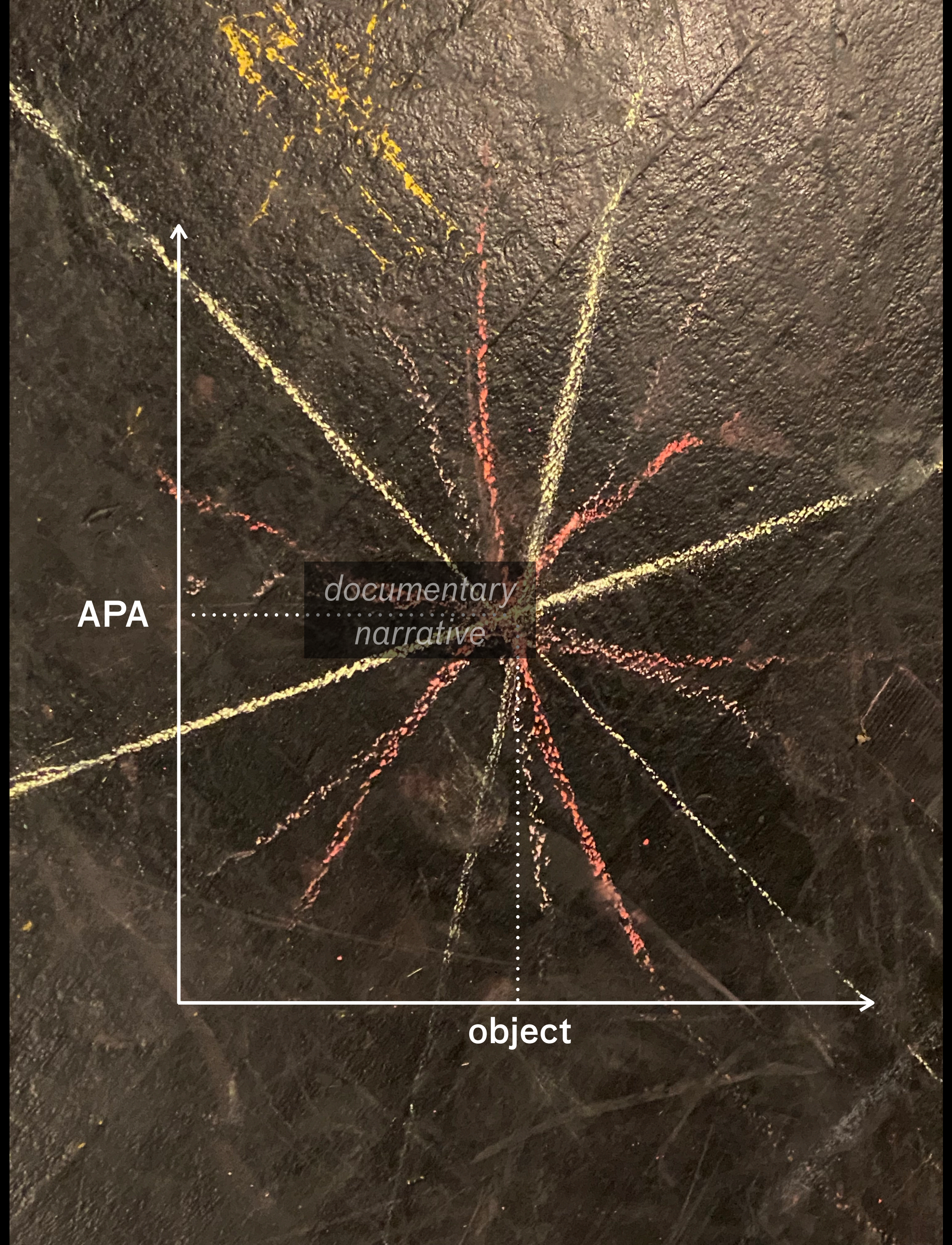


Vaseghi, K. & Vaseghi, M. (circa 1984). *Oysterquartz Datejust*. (Watchmaker Bjerke AS. & Boutique Rolex - Pisa Orologeria. Rep.). ([17014 ed.]. White Dial Black Roman 36mm Stainless Steel ed.). London & Geneva. Rolex.



The moment we single out and emphasize the suggestions (...) they become unreal; and we, too, become unreal. (1937)

Bratland, L.H. (2022). *Passing Russel Square* [poster]. Woolf, Virginia. (1937). On Craftmanship [reference]. Oslo: MAGI-workshop Studio 2.



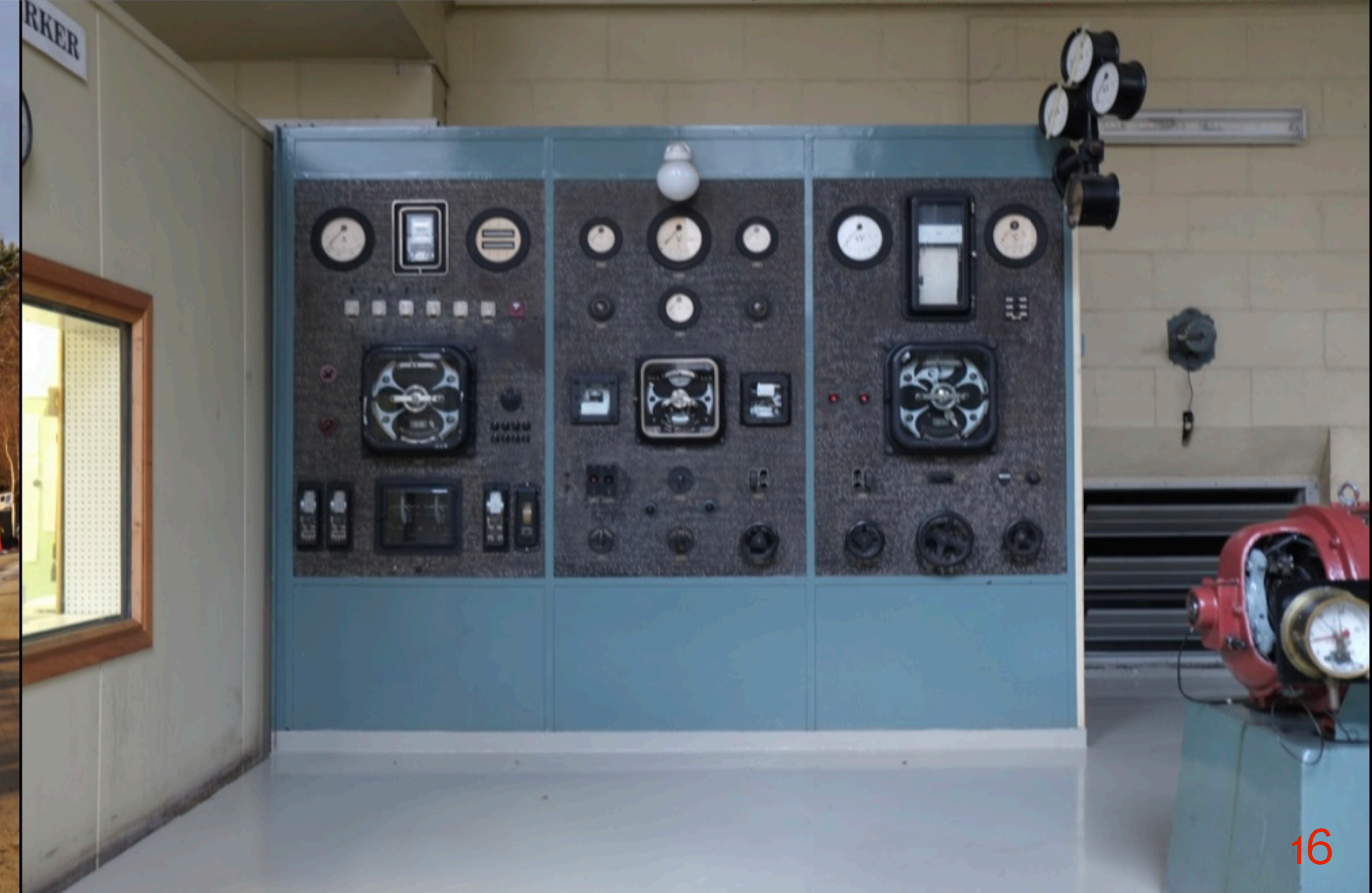
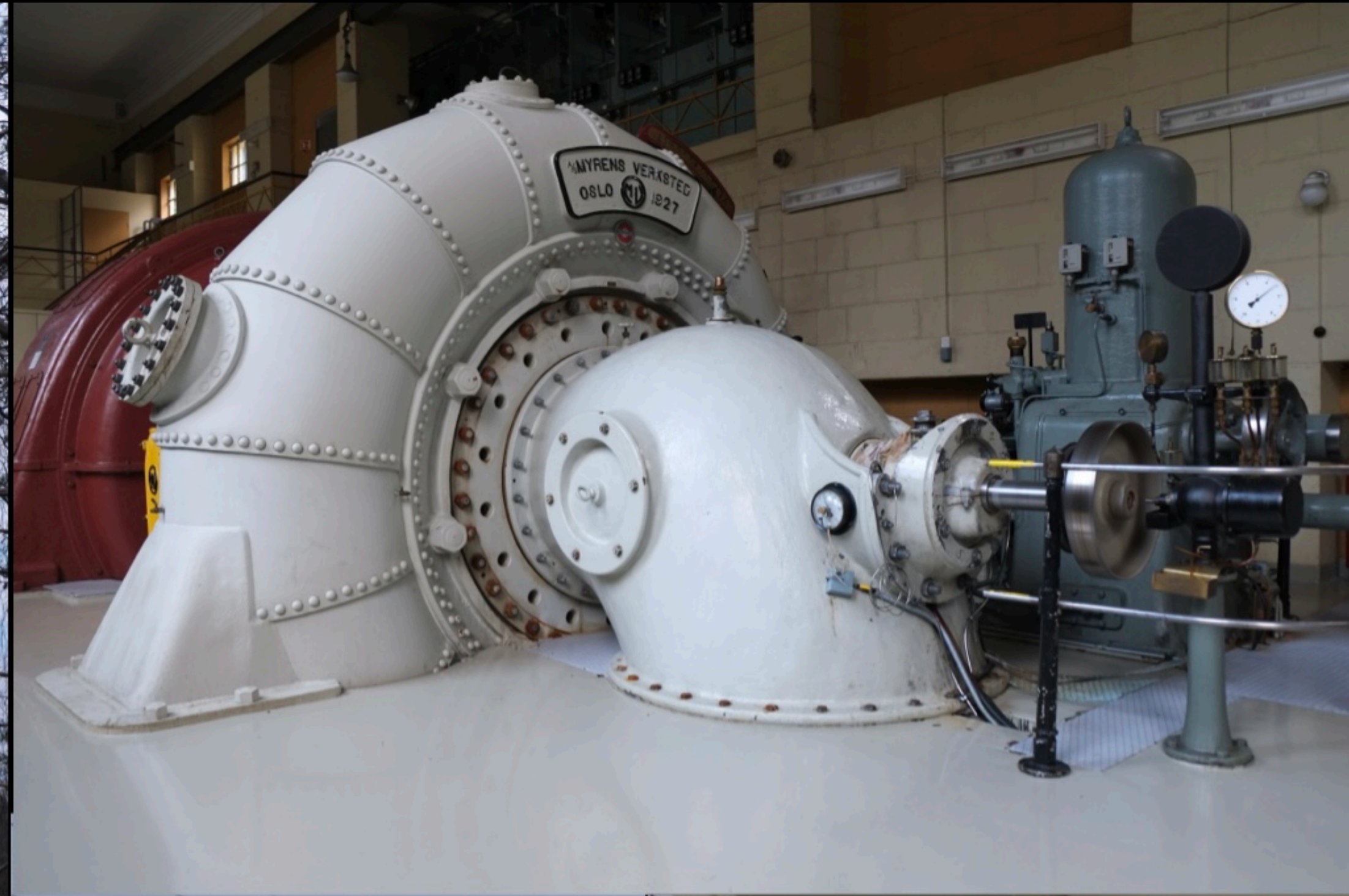
APA

documentary
narrative

object

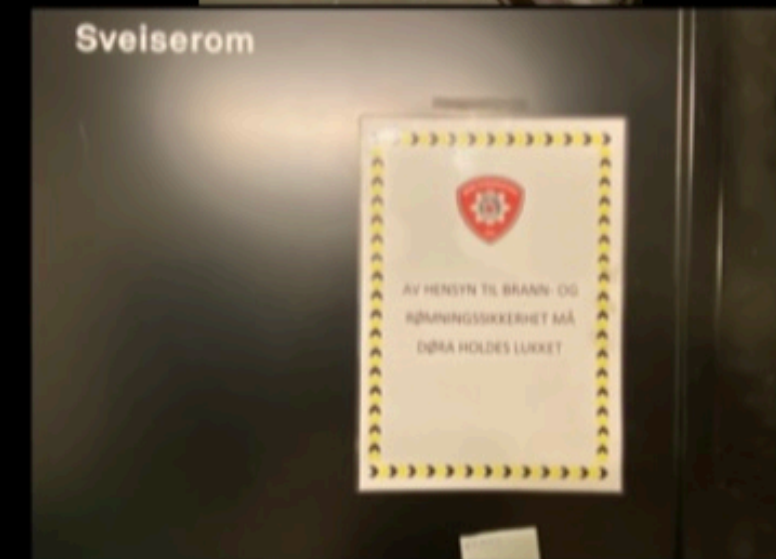
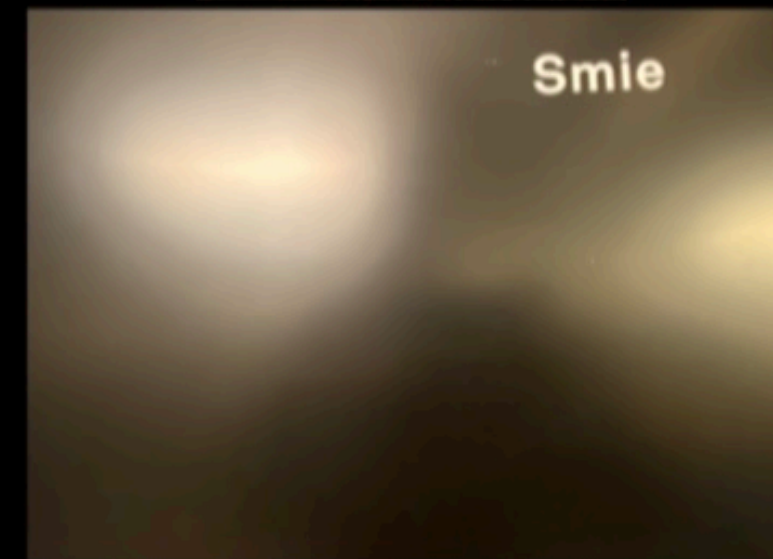
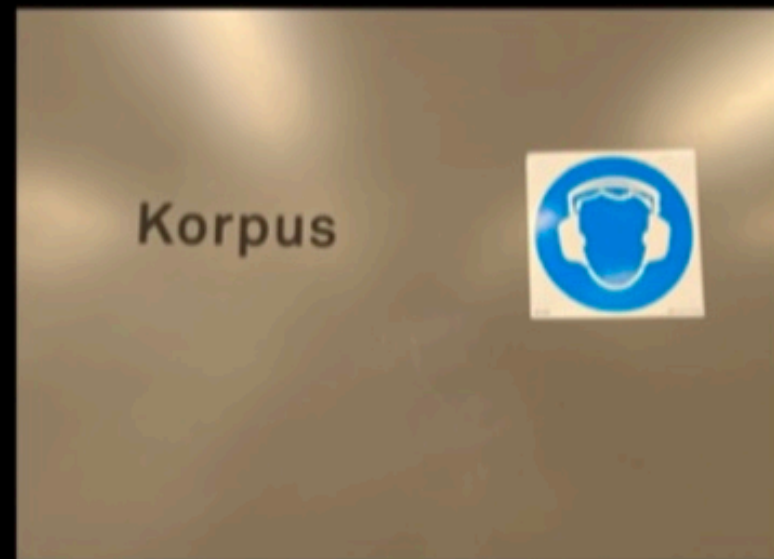
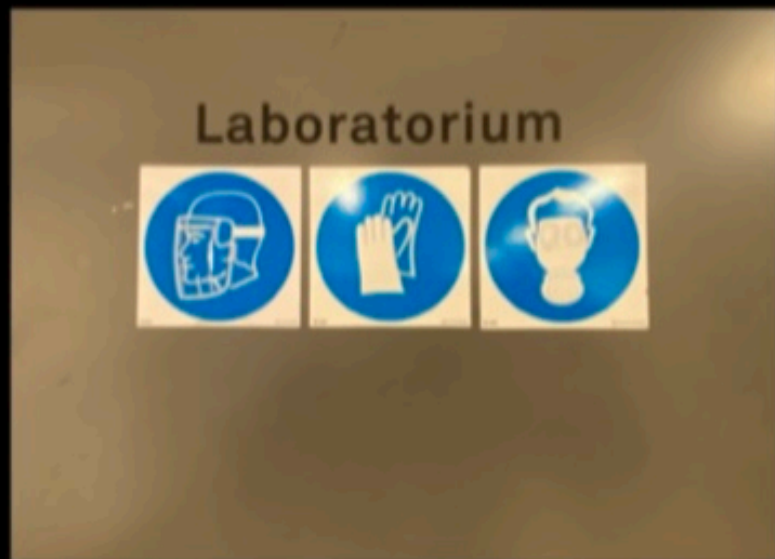
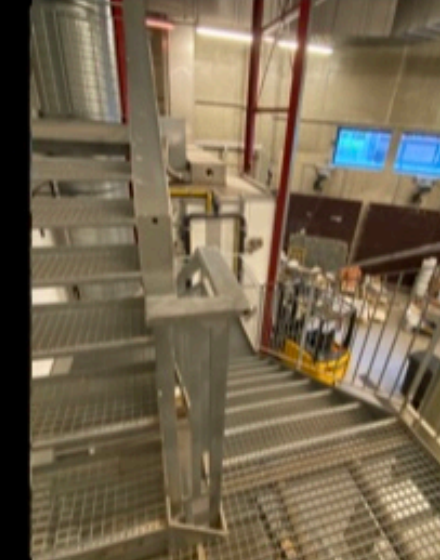
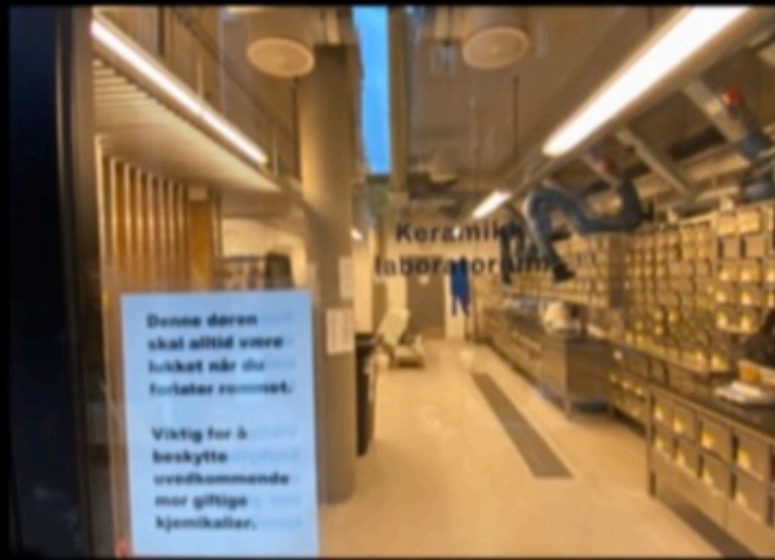
SEE HOW PURCHASES IMPACT
HEALTH ENVIRONMENT
ANIMALS LABORERS

ETHICAL CONSUMER GUIDE





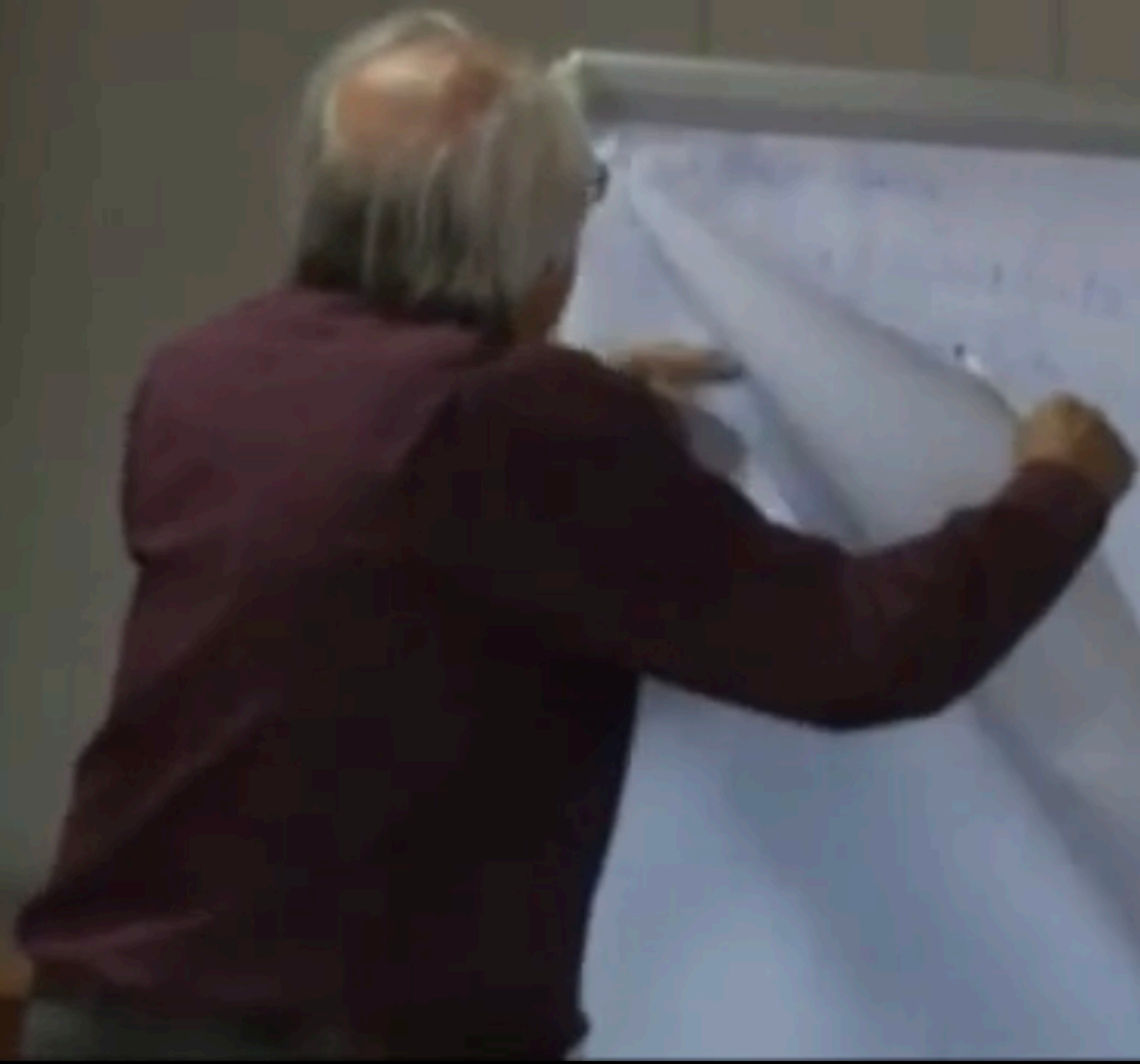




Framtidsbiblioteket
Future Library

2014-2048



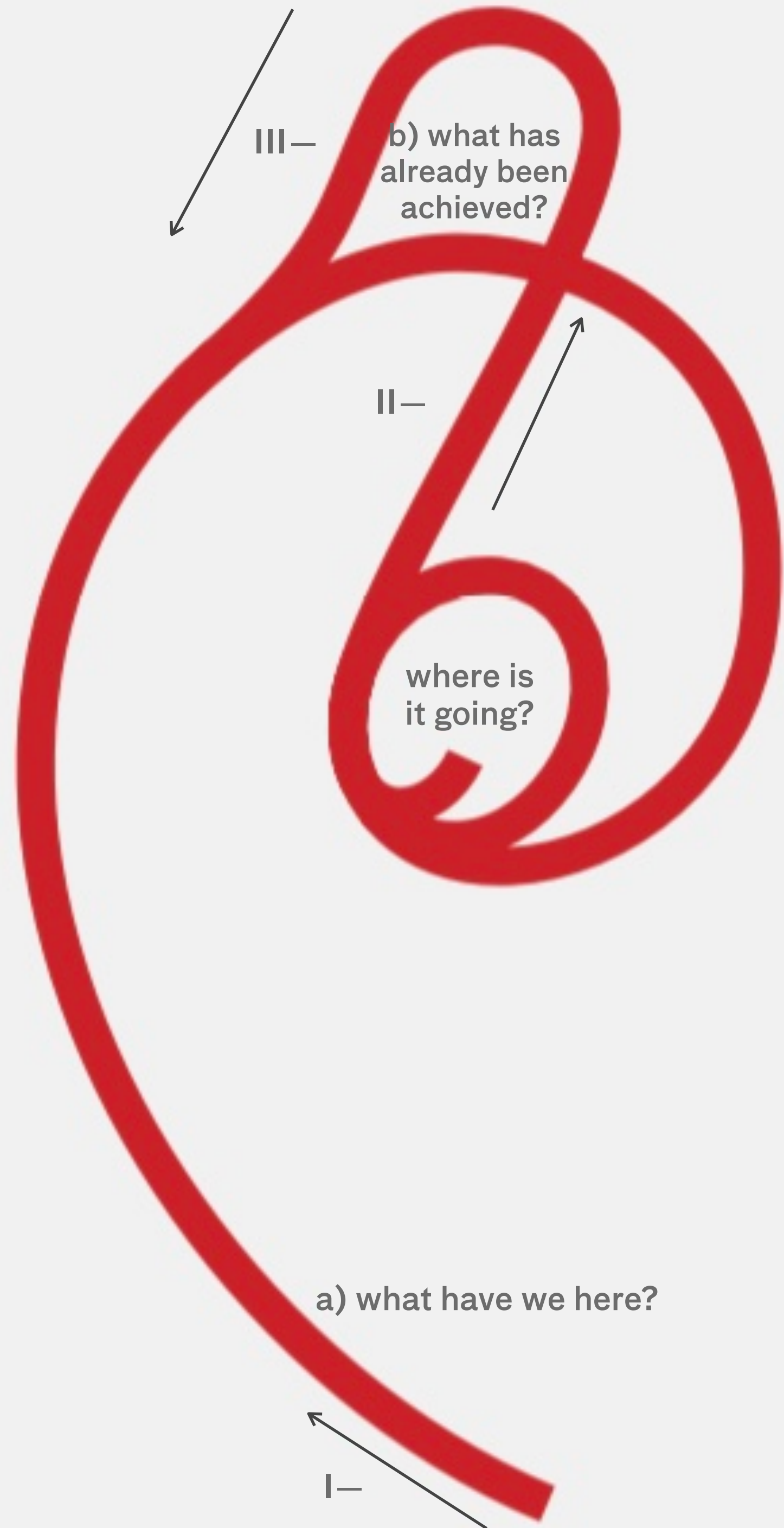




disconnective
reflection

media

connective
reflection

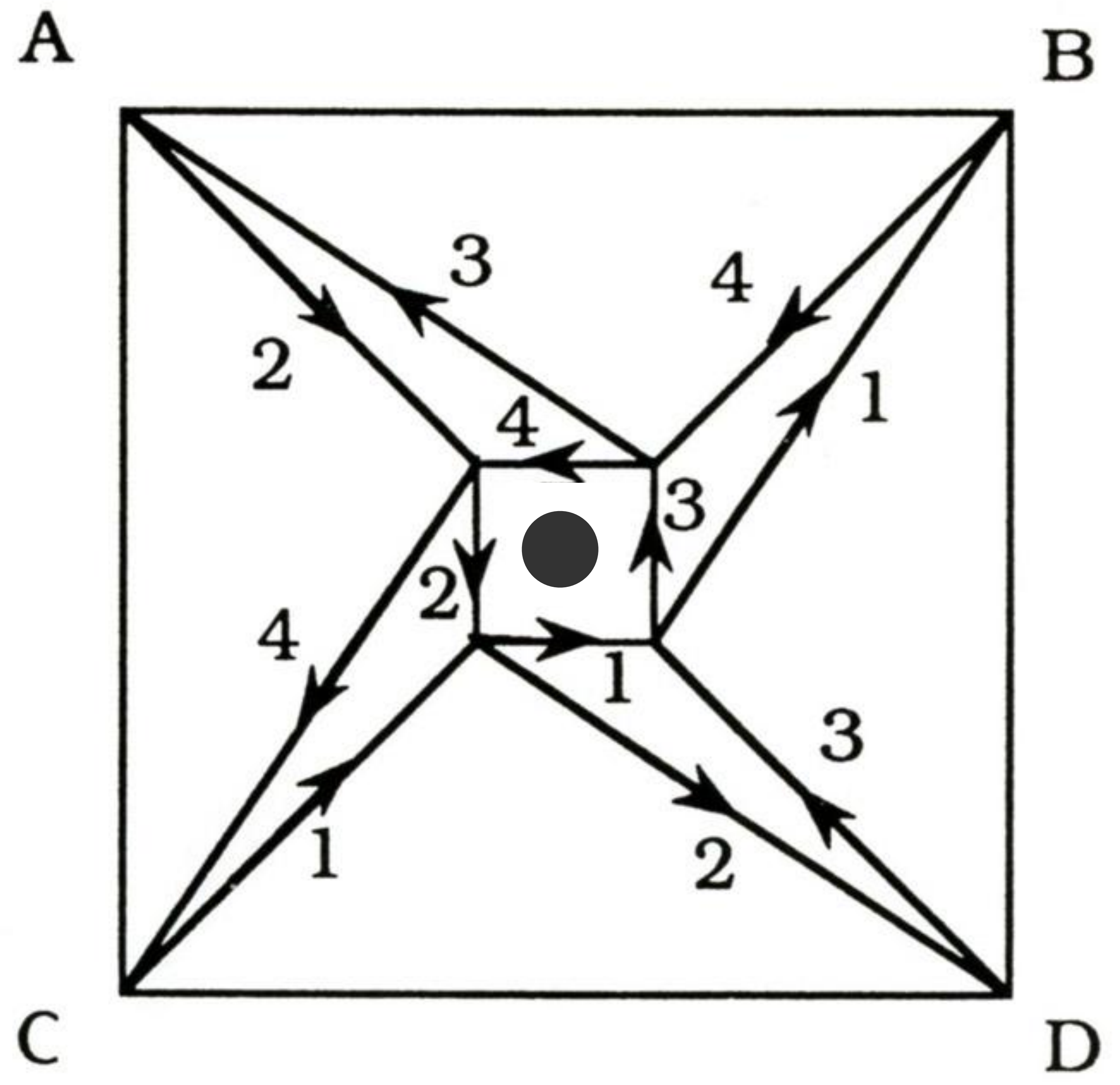


connective

vectorial

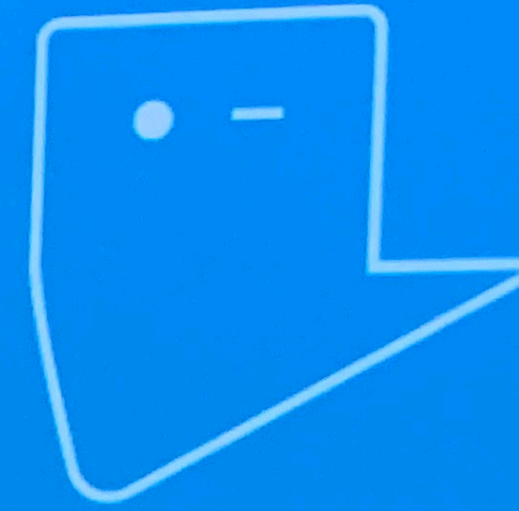
disconnective

F. Barth (1966:15): «Human behaviour is 'explained' if we show (a) the utility of its consequences in terms of values held by the actor, and (b) the awareness on the part of the actor of the connection between an act and its specific results».

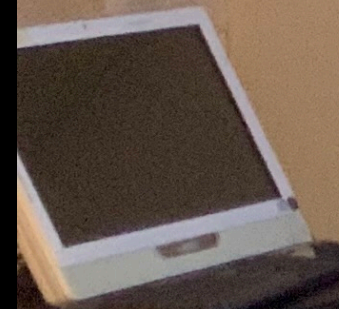
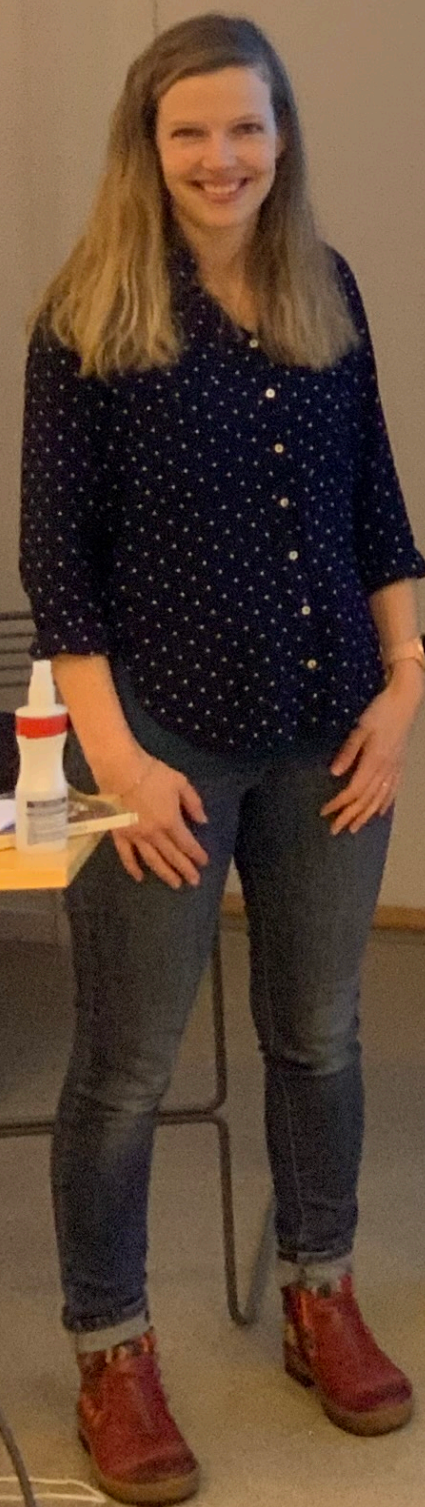


1—pitches an idea to work on
2—serves that idea with references
3—critiques these references
4—where to take it from here





Sjekk forbrukerradet.no





FIN